



Voice of the River

OPEN CALL FOR WRITERS AND ARTISTS, PICNICKERS, TEENAGERS, COMMUNITY LEADERS, SWIMMERS, SCOUTS, ROWERS, HISTORIANS, NIÑOS, POETS, OCTOGENARIANS, SCIENTISTS, OTTER-ADMIRERS, PESCADORES, CYCLISTS, PHOTOGRAPHERS, KAYAKERS, AND CLOUD-WATCHERS!

The Petaluma River Access Partners, a consortium of agency and non-profit staff members and volunteer citizens, is working together to implement the City's Petaluma River Access and Enhancement Plan. As part of this work, local writer and artist Patti Trimble is spearheading an exciting creative project. She's collecting pages from all corners of the community to assemble in an enormous one-of-a-kind community book: *Voice of the River*.

We want one page of your creative thoughts: your visions of the Petaluma River. We want to know what tributaries flow towards our river. What stories, histories, thoughts, visions? The river is many things to many people: the heart of our town; a quiet slough; a once- vibrant artery of Bay Area commerce; a glorious glint at a business lunch; a quiet refuge for a morning walk or paddle . . .

We'll have exhibits in Spring 2010, and your pages will also help shape a wayfinding system and works of art along the Petaluma River.

It's easy to contribute! Take a moment. Imagine the river. Walk along its banks. Write a poem or story. Paint or draw a river view. Send a page to us.

Together, let's celebrate how the river inspires us — historically, personally, and as a vibrant and creative city with a river running through it!

SEND US ONE PAGE OF YOUR CREATIVE WORK— ABOUT THE PETALUMA RIVER:

poetry essay fiction

historical account

river sketch map

plein air painting

interview with an elder

nature writing

children's artwork

Native American story

published writing

notes while rowing

love letter to the river

photograph song lyrics ode

wildlife description

thoughts at lunch

GUIDELINES

- Submissions will be exhibited in spring 2010, in a variety of venues.
- Send one page, must be **8 ½ x 11**.
- Pages will be accepted **through May 1, 2010**.
- *Please, only writing / artwork about the Petaluma River, suitable for family reading!*
- Send **photocopies** of original artwork! We will not return work, and will exhibit or publish with one-time rights only.
- Write your name on your page. Enclose a separate note with your email address. (Groups and teachers can provide one email address.)
- Mail your page, or drop it off—

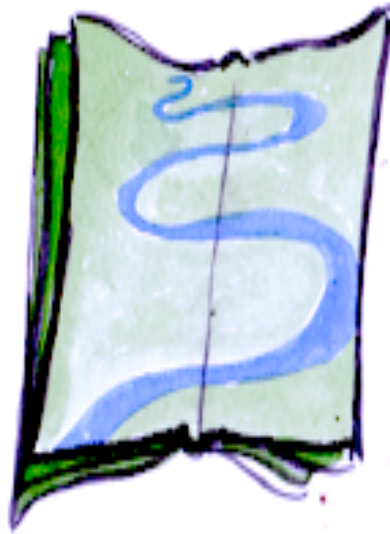
Voice of the River
c/o Scott Brodhun
Assistant City Manager
City Manager's Office, City Hall
11 English Street
Petaluma, CA 94952

OR

Voice of the River
c/o Donnie Frank
Petaluma Community Center,
320 N McDowell Blvd
Petaluma, CA 94954-2352

for more info:

www.cityofpetaluma.net/river



*. . . the blue vein in our center slips
between highway and hill
as seven red-winged blackbirds
pull stitches on a quilt of song
and lay it over the rushwoven bed—*

*We are born more of place
than of person
and so we learn from river
to rest here in sound,
while falling forward and on. . . .*

from "Petaluma River"
Patti Trimble

